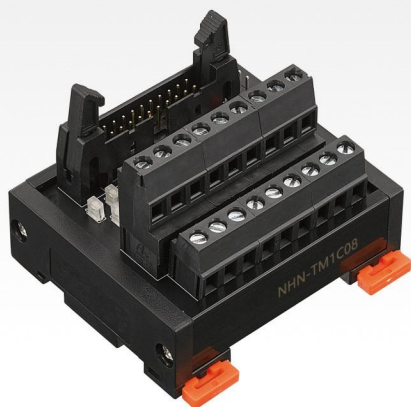


NHN-TM1C08

Input and Output Terminal Block
输入输出端子台



产品特点 FEATURES

- 采用20P的MIL连接器作为进线端；配合本公司相对应的X系列缆线，可以直接对应市面上任意一款带16位输入/输出的PLC模块，并且整理为2组8位的端子。
- NPN/PNP双极性输入对应，并且指示灯也会跟随输入信号的不同而亮不同颜色；
- 绿色—NPN；红色—PNP
- Utilizes a 20 pin MIL connector as the incoming terminal. Used in combination with the corresponding X series cable of the company, it's directly applicable to any PLC module with 16 bit I/O on the market. The terminal block is divided into 2 sets of 8 bit terminals.
- NPN/PNP bipolar input corresponding, and the indicator light will also follow the input signal of different and bright color;
- Green-NPN; Red-the PNP.

注意事项 Note

- 订购前请确认负载类型和大小，选择使用合适方式进行控制。
- 和PLC连接时，请勿必使用本公司开发的与之对应的专用电缆线。
- Before ordering, please confirm the load type and size, choose the suitable way to control.
- When PLC connection, please be sure to use the company developed and the corresponding special cable.

关联产品 RELATED PRODUCTS

适用电缆 Suitable cable	X213-1	X21B-1	X21B-2	X215-1	X215-2	X215-5	X215-6	X218-2	X218-3	X218-4	X218-5
---------------------	--------	--------	--------	--------	--------	--------	--------	--------	--------	--------	--------

适用PLC SUITABLE PLC

OMRON	CJ1W-MD231(IN) CJ1W-MD231(OUT) CJ1W-MD232	CJ1W-MD233(IN) CJ1W-MD234(OUT)
mitsubishi	FX1NC-16MT(IN) FX1NC-32MT(IN) FX2NC-16MT(IN) FX2NC-32MT(IN) FX3UC-32MT(IN) FX2NC-16EX FX2NC-16EX-C FX2NC-16EXL-C	FX1NC-16MT(OUT) FX1NC-32MT(OUT) FX2NC-16MT(OUT) FX2NC-32MT(OUT) FX3UC-32MT(OUT) FX2NC-16EYT FX2NC-17EYT-C
AB	NX70-X32D NX70-X32D1 NX70-XY32(IN)	NX70-Y32T NX70-XY32(OUT)
Yokogawa	F3WD32-3F	

规格参数 SPECIFICATIONS

输入 INPUT

- 额定电流 Nominal operating current 1A
- 额定电压 Nominal coil voltage DC 24V

输出侧对应 Corresponding output Devices

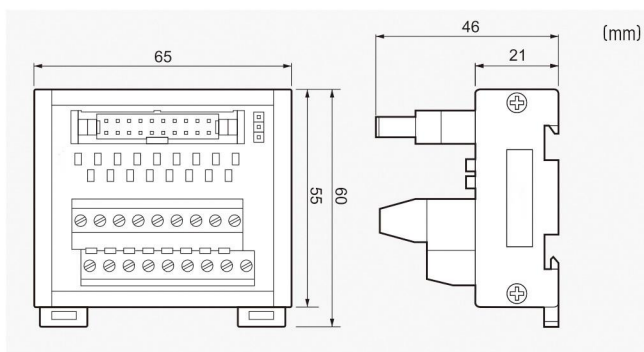
The input side output side of the load switching. Input side of the switching elements. The output side of the load.

适合电线 SUITABLE WIRE

剥线长度: 6mm 1.5mm² Following /AWG16



外形尺寸图 DIMENSIONS



接线图 WIRING DIAGRAM

