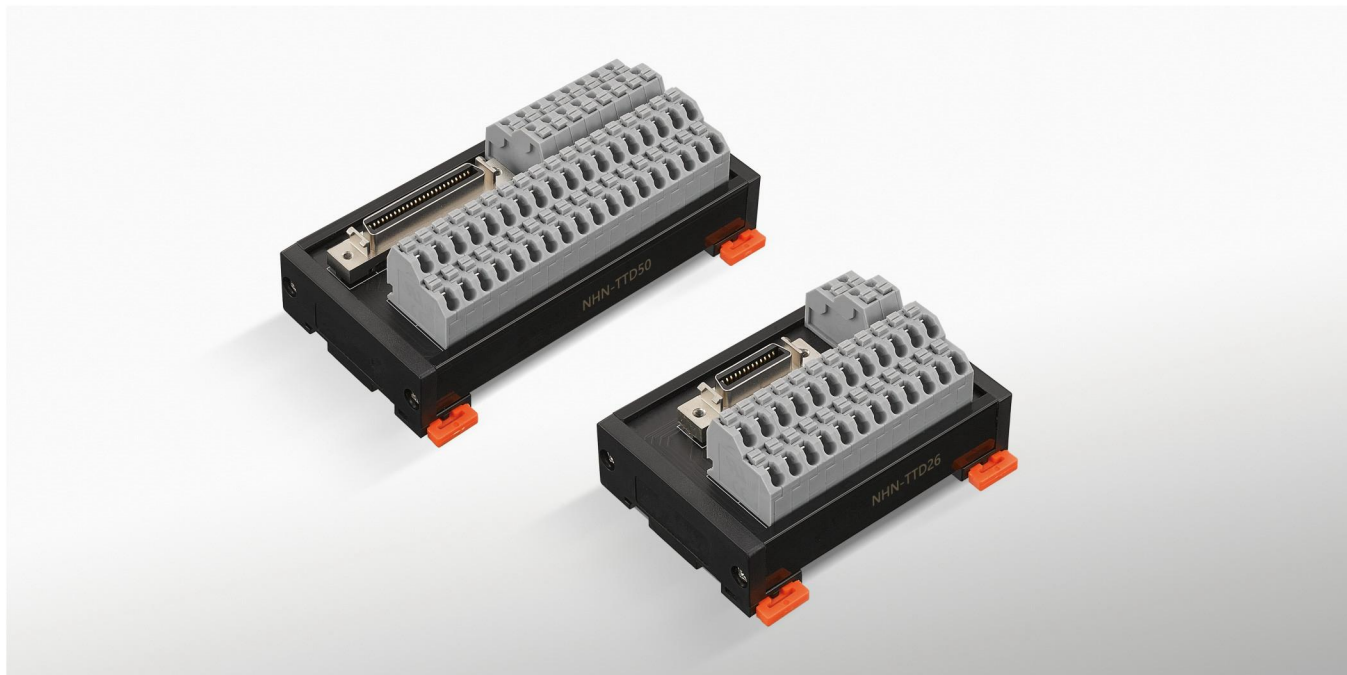


NHN-TTD26/TTD50

Metal Dome Type Transition Terminal Block
弹片式转换端子台



产品特点 FEATURES

- 本接线板对应26/50P的MDR连接器；
- 可直接应用于三菱、安川、松下、台达、三洋、AB等伺服驱动器的信号线接口；
- 无需焊线，只需看准一对一管脚接线即可；
- 输出接口为弹片式端子，方便快速接线；
- PE为插头外壳接地，已引到端子上，方便接地线；
- 节省时间，避免错误焊接。

- This terminal board is applicable to 26/50pin MDR connector;
- It can be used on the signal line port on Mitsubishi, Yaskawa, Panasonic, Delta, Sanyo and AB servo drives;
- No soldering is required. Connect the corresponding pins correctly;
- The output interface is shrapnel terminal, convenient and fast wiring;
- PE is the earthing of the plug shell, which has been led to the terminal to facilitate the earthing wire;
- Saves time and can prevent wrong wiring connections.

注意事项 Note

- 订购前请确认好PLC引脚定义，选择适合的端子台。
- 和PLC连接时，请勿必使用本公司开发的与之对应的专用电缆线。
- Before ordering, please confirm the PLC pin definition, choose the suitable terminal.
- When PLC connection, please be sure to use the company developed and the corresponding special cable.



适合电线 SUITABLE WIRE

剥线长度: 6mm 1.5mm² Following /AWG16



选型参考 TYPE SELECTION REFERENCE

型号 Model	NHN-TTD26	NHN-TTD50
名称 Name	26位MDR插头端子台 26 bit metal dome type terminal block	50位MDR插头端子台 50 bit metal dome type terminal block
输出结构 Output structure	双层弹片式端子 Double metal dome type terminal block	



适用PLC SUITABLE PLC

伺服驱动器 Servo Drive
Mitsubishi Yaskawa Panasonic Delta, Sanyo AB etc. servo drive interface

关联产品 RELATED PRODUCTS

适用电缆 Suitable cable	X220-9S	X220-1S	X220-4S



规格参数 SPECIFICATIONS

输入 INPUT	
• 额定电流 Nominal operating current	1A
• 额定电压 Nominal coil voltage	DC 24V
输出侧对应 Corresponding output Devices	Servo motor control signal line circuit

NHN-TTD26/TTD50

Metal Dome Type Transition Terminal Block
弹片式转换端子台

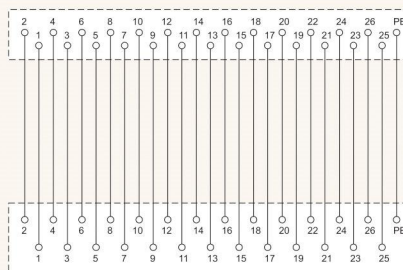
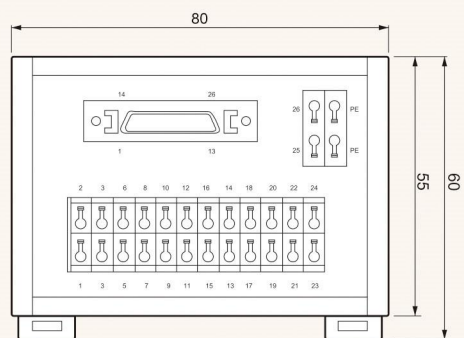
配线图及外形图 WIRING DIAGRAM AND DIMENSIONS

NHN-TTD26

[mm]

外形尺寸图 Dimensions

配线图 Wiring Diagram



NHN-TTD50

外形尺寸图 Dimensions

配线图 Wiring Diagram

