



Draw Spring Inner Micro Switch

Part No.

NL-10
NL-5



- Economical, subminiature, long service life
- Free from overtravel restrictions, easy setting
- Standard operating force, low force force
- RoHS Compliant

ORDERING INFORMATION

NL- - -
 ① ② ③ ④ ⑤ ⑥

1. Ratings

5: 5A at 250VAC
10: 10A at 250VAC

2. Actuator

None: Pin plunger
Z: Hinge lever
W: Simulated roller lever
G: Hinge roller lever

3. Maximum Operating Force

None: 1.1N
F1:1.9N
F2:2.7N
F3:3.6N

4. Contact Form

None: SPDT
2: SPST-NC
3: SPST-NO

5. Terminals

None: Solder terminals
T: Quick-connect terminal (#110)
D: PCB terminals (Even pitch)
D1: Left angle PCB terminals
D2: Right angle PCB terminals

6. Shell Material

None: PMC
P: PBT

SAFETY APPROVAL

UL61058

CSA-C22.2 No.61058-1

Rated voltage	Rated current
AC125V	5A
AC250V	5A

CQC

GB15092.1-2003

Rated voltage	SL- J10	SL- J5
AC125V	10A	5(2)A
AC250V	10A	5(2)A

ENEC (EN61058-1)

Rated voltage	SL- J1	SL- J5	SL- J10
AC125V	0.5A	5A	10A
AC250V	0.5A	5A	10A 5(2)A

TECHNICAL DATA

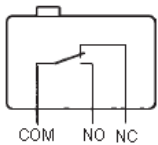
Item Type		NL-10 / NL-5
Allowable operating speed		0.1~1000 mm/s or 0.5~1000 mm/s
Operating frequency	Mechanical	Max.: 200 times/min
	Electrical	Max.: 30 times/min
Insulation resistance		Min.: 100MΩ (500VDC)
Contact resistance		50mΩ
Dielectric strength	BTW same polarity terminals	AC1000V 50/ 60Hz 1min
	BTW current-carrying parts	AC1500V 50/ 60Hz 1min
	BTW terminal & metal parts	AC1500V 50/ 60Hz 1min
Vibration resistance	Malfunction	10~55Hz amplitude 1.5mm
	Durable	1000 m/s
Shock resistance	Malfunction	300 m/s
	Mechanical life	Min.: 1x10 ⁶ (60 times/min)
Expected life	Electrical life	Min.: 1x10 ⁵ (30 times/min)
	Protection degree	IP40
Ambient operation temperature		0°C~+125°C
Ambient humidity		85%RH
Weight		Approx. 1.6g (pin plunger type)

CONTACT SPECIFICATION

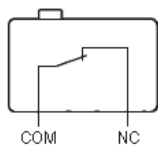
Item	NL-10	NL-5
Specification	Rivet	
Material	Silver alloy	
Gap (Standard value)	0.5mm	
Inrush current	NC	20A max.
	NO	15Amax.
Minimum applicable load	160mA at 5VDC	

CONTACT FORM

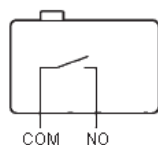
SPDT



SPST-NC

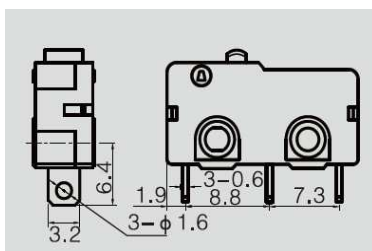


SPST-NO

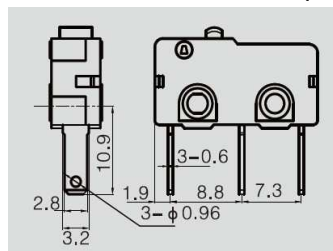


TERMINAL

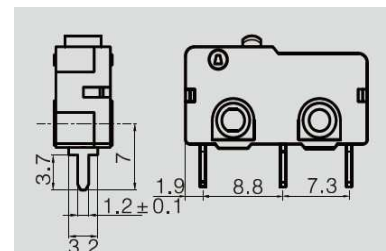
Solder Terminals



Quick-connect Terminals (#110)

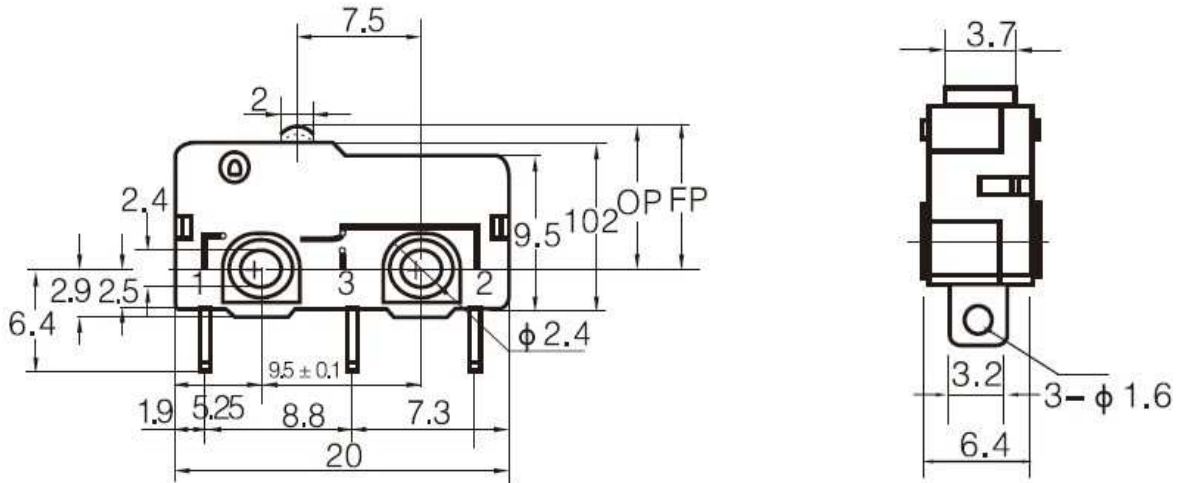


PCB Terminals



DIMENSIONS (mm)

Pin Plunger Models

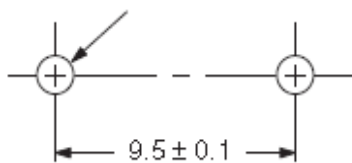


OPERATING CHARACTERISTICS

Operating performance	NL-10 NL-5	NL-10F1 NL-5F1	NL-10F2 NL-5F2	NL-10F3 NL-5F3
OF max.	1.0±0.3	1.5±0.4	2.3±0.4	3.2±0.5
RF min.	0.15	0.35	0.55	0.55
PT max.	0.6mm	0.6mm	0.6mm	0.6mm
OT min.	0.5mm	0.5mm	0.5mm	0.6mm
MD max.	0.2mm	0.2mm	0.2mm	0.2mm
OP	8.55±0.2mm			

MOUNTING HOLES

Two, 2.4-dia. mounting holes or
M2.3 screw holes



All switches may be panel mounted using M2.3 mounting screws with plane washers or spring washers to securely mount the switch.

Tighten the screws to a torque of 0.23 to 0.26 N·m.