



Industrial & Electrical Components

General Purpose Power Relay

Part No.

NNC68AZL-2Z



- General purpose power relay
- For plug-in socket, 35mm DIN rail
- With Rotary Lock Mechanism
- LED indication

CONTACT

Arrangement	2A/2B/2C
Contact Material	AgSnO ₂ /Cu
Contact Resistive (6VDC, 1A)	Max.: 100 mΩ
Rating	
Resistive load (cosφ=1)	12A 240VAC/28VDC (Resistive)
Max. Switching Voltage	240VAC/28VDC
Atmospheric pressure	86-106KPa
Expected life	
Mechanical	1×10 ⁷
Electrical	1×10 ⁵

CHARACTERISTICS

Operate Time	15ms. Max.
Release Time	10ms. Max.
Dielectric Strengths(Leak Current 1mA)	
Between Coil & Contacts	1500VAC for 1 min.
Between Contacts	1000VAC for 1 min.
Insulation Resistance	Min.100MΩ (500 VDC)
Shock: Endurance	10G
Error Operation	100G
Vibration Endurance	Amplitude 1.5mm, 10~55Hz
Error Operation	Amplitude 1.5mm, 10~55Hz
Ambient temperature	-55℃~+70℃
Unit weight	35g

ORDERING INFORMATION

e.g

NNC68AZL - 2C - DC12V

①

②

③

① Part No.: Z=With Rotary Lock Mechanism

L = LED indication

② Contact arrangement:

2C=2C/O

③ Coil Voltage: DC12V=12VDC

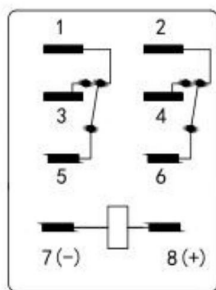
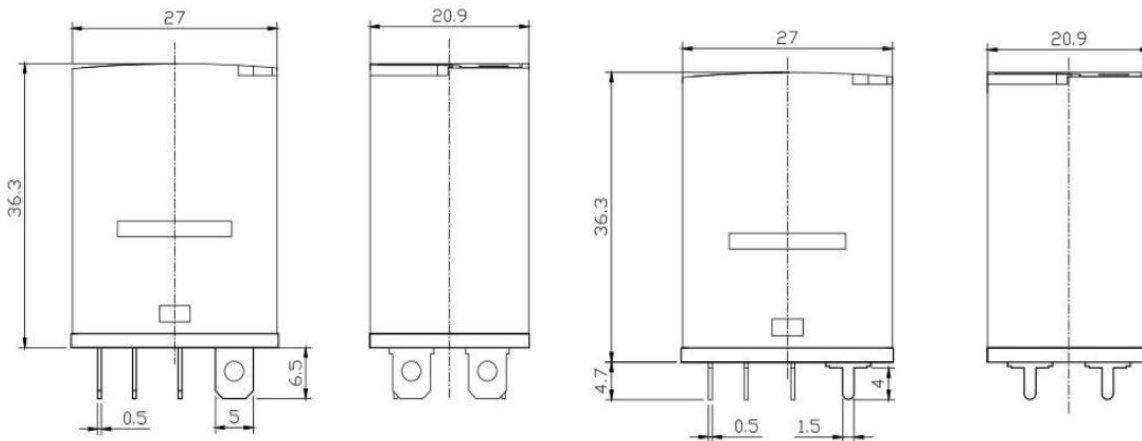
COIL DATA (at 20°C)

Rated Voltage	Pick-up Voltage VDC (Max)	Drop-out Voltage VDC (Min)	Coil Resistance (Ω) ± 10%	Nominal operating Power	Max.Allowable Voltage (V)	
12VDC	9.00	1.20	160.00	0.9W	110% of nominal voltage	
24VDC	18.00	2.40	640.00			
48VDC	36.00	4.80	2560.00			
110VDC	82.50	11.00	13400.00			
Rated Voltage	Pick-up Voltage VAC (Max)	Drop-out Voltage VAC (Min)	Coil Resistance (Ω) ± 10%	Nominal operating Power		
12VAC	9.60	3.60	42.00	1.2VA		
24VAC	19.20	7.20	168.00			
48VAC	38.40	14.40	672.00			
110VAC	88.00	33.00	3529.00			
220VAC	176.00	66.00	14116.00			

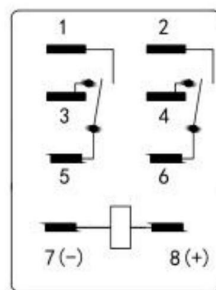
DIMENSIONS(Unit: mm)

Plug in Type:

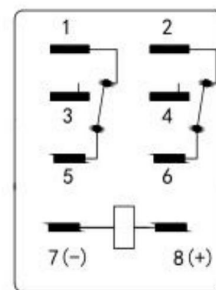
Pcb Type:



2C



2A



2B

